



IPC

BY TENNANT COMPANY

VACUUM CLEANERS - WET & DRY - PREMIUM

GP 2/62 W&D GS 2/62 W&D

POWER MAX

2400
W

WATER LIFT

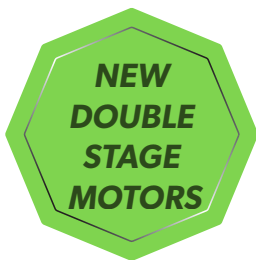
2470
mmH₂O

AIRFLOW

420
m³/h

TANK CAPACITY

62
l



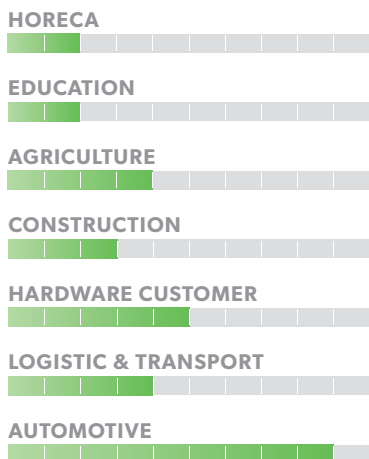
EXCLUSIVE FEATURES

- ▶ AP TUBE
- ▶ SANIFILTER
- ▶ INNOVATIVE GASKET
- ▶ STRONG HOOKS
- ▶ INDEPENDENT MOTORS WITH LIGHT SWITCHES
- ▶ SEALANT FLOATER & INTEGRATED ANTIFOAM SYSTEM
- ▶ DRAIN HOSE
- ▶ RELIABLE CONSTRUCTION FOR INTENSIVE USE
- ▶ DOUBLE STAGE POWERFUL MOTORS



MICROFIBER BAG INCLUDED

MOST FREQUENTLY USE



INNOVATIONS

- BLACK IS GREEN™
- HIGHEST PERFORMANCE DOUBLE STAGE MOTORS
- NEW BLEND FLEXIBLE HOSE

SPECS



DRAIN HOSE



TROLLEY WITH HANDLE AND CLIPS FOR PARKING POSITION



LARGE REAR WHEELS WITH TYRES

TECHNICAL DATA

		GP 2/62 W&D	GS 2/62 W&D
Code		ASD015022	ASD015040
PERFORMANCE			
Usage		WET&DRY	WET&DRY
Motor		2x 2-stage	2x 2-stage
Power	W	2000 - 2400 max	2000 - 2400 max
Voltage	V	220 - 240	220 - 240
Water lift	mmH ₂ O	2470	2470
Airflow	m ³ /h	420	420
Tank Capacity/Material	l	62/plastic	62/plastic
Cable length	m	8.5	8.5
Sound Pressure Level (EN 60704-1; EN 60704-2-1; IEC 60335-2-69)	dB(A)	74	74
Diameter of inlet	mm	60	60
Diameter of accessories	mm	38	38
Dimensions (LxWxH)	mm	550x600x960	550x600x960
Weight	Kg	20,0	21,0

STANDARD EQUIPMENT

CODE: TBFX01231
EXTRA STRONG FLEXIBLE HOSE 2,5 m Ø38 mm



CODE: LAFN43048 (FOR 1 PC)
ALUMINIUM/PLASTIC TUBE 50 cm Ø38 mm (MACHINE COMES FOR 2PCS)



CODE: MPVR43047
HANDLE WITH AIR REGULATOR Ø38 mm



CODE: SPPV43050
DUST TOOL Ø38 mm



CODE: SPPV43051
WET TOOL Ø38 mm



CODE: SPPV00156
FLAT LANCE Ø38 mm



CODE: SPPV43052
ROUND BRUSH Ø38 mm



CODE: MPVR43049
ADAPTER



CODE: FTDP28733
DRY FILTERING KIT



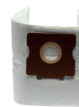
OPTIONAL ACCESSORIES

CODE: KTRI02912
PAPER BAG SET OF 10 PCS



X10

CODE: KTRI04796
MICROFIBER BAG SET OF 10 PCS



X10

CODE: FTDP00223
PREFILTER PCB



CODE: FTDP00654
WASHABLE CARTRIDGE KIT W/RING AND GASKET



CODE: FTDP00657
HEPA CARTRIDGE KIT W/RING AND GASKET



CODE: MPVR28723
FASTENING PLASTIC RING



CODE: FTDP44260
WASHABLE POLYESTER CARTRIDGE (AVAILABLE AS SPARE PART) 3.000 cm²



CODE: FTDP28844
HEPA H13 CARTRIDGE (AVAILABLE AS SPARE PART) 3.000 cm²



CODE: FTDP28755
MESH FILTER



CODE: SPPV01336
CARPET BRUSH Ø38 mm



CODE: SPPV28248
FIXED ACCESSORY FOR LIQUID



CODE: SPPV28247
FIXED ACCESSORY FOR DUST



CODE: SPPV30894
FIXED ACCESSORY FOR DUST AND LIQUIDS



CODE: KTRI06274
3D WET FILTERING KIT FOR MIXTURES



CODE: KTRI06214
DFS HEPA H14 KIT



CODE: MPVR10391
OPTIONAL TOOL HOLDER



CODE: KTRI02735
CONDUCTIVE TOOL KIT Ø38 mm (FOR STEEL TANK MODEL)



CODE: SPPV37133
BRISTLE BRUSH Ø38 mm

