



## Product Data Sheet for SCOTT® PERFORMANCE Hand Towels - Interfolded / White /Small - 6689

### Product Information

<b>Product Long Code</b>	06689010
<b>Customer Facing Code</b>	6689
<b>Description</b>	SCOTT® PERFORMANCE Hand Towels - Interfolded / White /Small
<b>PDS Reference</b>	03/05/2018



### Packaging Configuration

<b>Case Contents</b>	15 Clips x 274 Sheets = 4110 Sheets
<b>Outer Pack Material</b>	Paper
<b>Commodity Code</b>	48182099



Icon	Dimension		Weight(kg)
	21.00	x 21.50	Length x Width(cm)

### Product Description

Paper towels that are dispensed one at a time so they're touched only by the user, dry your hands hygienically and effectively, and help reduce costs and waste.

Ideal for: busy office and hotel washrooms; drying your hands quickly and comfortably with fewer towels, as they're strong and highly absorbent without breaking up when wet; caring for the environment (carries the EU Ecolabel).

Available as: small, white, 1-ply folded hand towels with a soft and comfy feel, made from strong, highly absorbent AIRFLEX\* Fabric and supplied in cost-saving 'compressed' packs (with 18% more towels per case).

### Product Features

- 15 packs x 274 white, 1 ply sheets (4,110 total)
- Carries the European Ecolabel.
- Compressed packs ensure up to 18% more hand towels per case
- Interfolded hand towels that dispense one at a time, reducing waste and keeping refill frequency and costs to a minimum
- Compatible with AQUARIUS\* Folded Hand Towel Dispensers (product codes 6945, 6956 and 7171) and KIMBERLY-CLARK PROFESSIONAL\* Folded Hand Towel Dispensers (product code 9962 and 8971).
- Made using unique Airflex\* Technology. Soft, strong & highly absorbent, even when wet.
- Ideal for busy offices & hotel washrooms

# Product Data Sheet for SCOTT® PERFORMANCE Hand Towels - Interfolded / White /Small - 6689

## Product Specifications

<b>Fold Type</b>	I	<b>Virgin Fibre(%)</b>	10
<b>Bleaching Method</b>	Elemental Chlorine Free	<b>Embossing/textured</b>	No
<b>Technology</b>	Uncreped Through Air Dried (UCTAD)	<b>Folded Footprint Width (mm)</b>	105
<b>Plies</b>	1	<b>Bar Code (Case)</b>	05027375040801
<b>Recycled Fibre(%)</b>	90	<b>Colour</b>	White

# Product Data Sheet for SCOTT® PERFORMANCE Hand Towels - Interfolded / White /Small - 6689

International Standards and Symbols

## Marketing

### Healthy Workplace Project

EMPLOYEE : \* Health and Wellbeing of the individual \* Improved hygiene facilities \* Improved awareness of benefits of good hygiene \* Being cared for by their employer \* Reduction of illness at work and home  
EMPLOYER : \* THE HEALTHY WORKPLACE PROJECT\*, creating a healthier and more engaged workforce \* Reduced sickness helps lower absenteeism \* Engaged employees are more likely to "go the extra mile"



## Solution

### Healthier Workplace

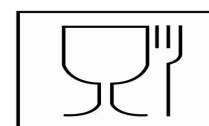
The HEALTHY WORKPLACE PROJECT\* is a comprehensive office hygiene programme which helps engage employees and reduce sickness.



## Standard R+E

### Food Contact Regulations

This product is suitable for food contact and complies with Regulation (EC) No. 1935/2004. Furthermore, nitrile rubber gloves comply with Regulation (EC) No. 10/2011 and German Recommendation, BfR No. XXI, and paper products comply with German Recommendation, BfR No. XXXVI.



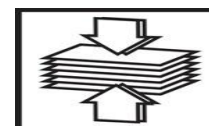
### AIRFLEX\* Technology

AIRFLEX\*



### Compression

KIMBERLY-CLARK PROFESSIONAL\* is using new air compression technology to fit up to 18% more paper hand towels into each case, resulting in a range of commercial and environmental benefits. The technology is being applied across a range of KLEENEX and SCOTT Hand Towels manufactured using AIRFLEX\* Fabric. Compressed AIRFLEX\* Fabric towels will continue to offer superior absorbency and strength and outstanding levels of hygiene and comfort. Along with the following additional benefits: Environmental, it means more towels per truck so fewer trucks on the road. Packaging waste is also reduced. End-users will now need to use less warehouse storage space for the same amount of hand towels, while more towels in each sleeve will mean fewer refills are required.



## Trade

### ISO 14001

ISO 14001 is an international environmental standard. Designed to help organisations ensure that operations comply with environmental laws, and; major environmental risks and liabilities are properly identified, minimised and managed.



### ISO 9001

This gives the requirements for quality management systems, is now firmly established as the globally implemented standard for providing assurance about the ability to satisfy quality requirements and to enhance customer satisfaction in supplier-customer relationships.

### Regulation (EC) No 66/2010 of the European Parliament

The European Ecolabel scheme encourages businesses to market products and services that are kinder to the environment. Only products that meet strict environmental standards are entitled to use the Ecolabel accreditation.



# Product Data Sheet for SCOTT® PERFORMANCE Hand Towels - Interfolded / White /Small - 6689

## Packaging

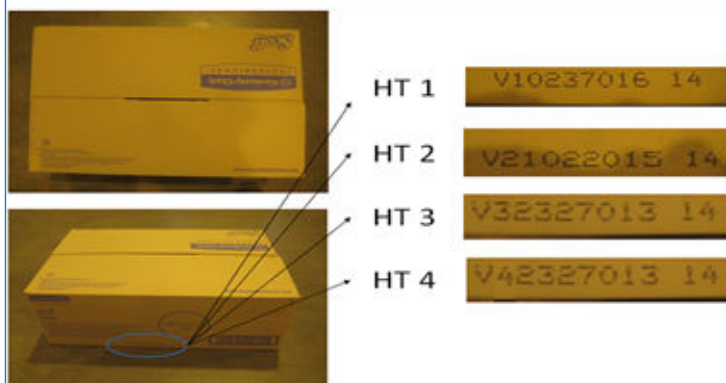
<b>Unit Of Sale</b>	Case	<b>Net Weight(kg)</b>	6.495
<b>Max Weight(kg)</b>	7.77	<b>Case Dimension (LXWXH)(cm)</b>	55.1 x 39.2 x 22.2
<b>Inner Pack Material</b>	Paper	<b>Full Pallet</b>	Yes

Pallet Type	LxWxH (m)	Cases per Layer	Layers per Pallet	Cases per Pallet
A2	1.20 x 1.00 x 1.26	5	5	25

## Related Products

Product Code	Description	Recommendation
	Fits Dispenser	
6945	AQUARIUS* Folded Hand Towel Dispenser - Interleaved / White	✓
6956	AQUARIUS* Folded Hand Towel Dispenser - Multifold / White /Small	
7171	AQUARIUS* Folded Hand Towel Dispenser - Interleaved / Black	
9962	KIMBERLY-CLARK PROFESSIONAL* Folded Hand Towel Dispenser - Interleaved / White	
8971	KIMBERLY-CLARK PROFESSIONAL* Hand Towel Dispenser - Stainless steel	

## Batch Code



## Information

It is the employer's responsibility to assess the risk of the task to be undertaken and determine the correct choice of wipers for the task. The manufacturer, Kimberly-Clark, does not accept any responsibility for the incorrect choice or misuse of wipers shown in this brochure. All care has been taken to ensure that the information contained herein is as accurate as possible at the time of publication, however errors may occur and legislation concerning personal protective equipment is under constant review and may change in the lifetime of this brochure. Accordingly, the specifications for the products may be subject to change. We would advise you to contact INFOFAX if you have any queries concerning the products shown or the suitability of such products for the particular task. Always dispose of used protective equipment in a safe and appropriate manner in accordance with European, National and Local environmental regulations

<b>Infofax Details</b>	infofax@kcc.com	<b>Websites</b>	www.kcprofessional.co.uk
<b>Customer Service Number</b>	For more information please contact Customer Service during regular office hours-0870 551 044		
<b>Country of Origin</b>	FRANCE		