



IPC

BY TENNANT COMPANY

VACUUM CLEANERS - WET & DRY - PREMIUM

GP 1/27 W&D GS 1/33 W&D

POWER MAX

1200
W

WATER LIFT

2470
mmH₂O

AIRFLOW

210
m³/h

TANK CAPACITY

27 l
33 l



Take a look at GP 1/27 W&D in action

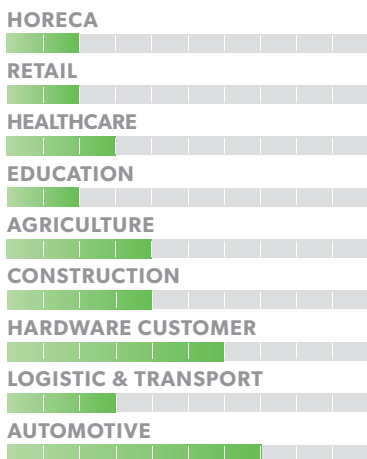
EXCLUSIVE FEATURES

- ▶ AP TUBE
- ▶ SANIFILTER
- ▶ INNOVATIVE GASKET
- ▶ STRONG HOOKS
- ▶ SCREWING CONNECTION
- ▶ SEALANT FLOATER & INTEGRATED ANTIFOAM SYSTEM
- ▶ RELIABLE CONSTRUCTION FOR INTENSIVE USE
- ▶ DOUBLE STAGE POWERFUL MOTOR



MICROFIBER BAG INCLUDED

MOST FREQUENTLY USE



INNOVATIONS

- BLACK IS GREEN™
- HIGHEST PERFORMANCE DOUBLE STAGE MOTORS
- NEW BLEND FLEXIBLE HOSE

SPECS



EXTREMELY FLEXIBLE HOOKS



CABLE HOOK



FLEXIBLE HOSE IS LOCKED SECURELY AND RELIABLY

TECHNICAL DATA

| | | GP1/27 W&D | GS1/33 W&D |
|--|--------------------|-----------------------|-----------------------|
| Code | | ASD015015 | ASD015036 |
| PERFORMANCE | | | |
| Usage | | WET&DRY | WET&DRY |
| Motor | | 1x 2-stage | 1x 2-stage |
| Power | W | 1000 - 1200 max | 1000 - 1200 max |
| Voltage | V | 220 - 240 | 220 - 240 |
| Water lift | mmH ₂ O | 2470 | 2470 |
| Airflow | m ³ /h | 210 | 210 |
| Tank Capacity/Material | l | 27/plastic | 33/steel |
| Cable length | m | 8,5 | 8,5 |
| Sound Pressure Level (EN 60704-1; EN 60704-2-1; IEC 60335-2-69) | dB(A) | 72 | 72 |
| Diameter of accessories | mm | 36 | 36 |
| Dimensions (LxWxH) | mm | 380x380x650 | 380x380x650 |
| Weight | Kg | 10,5 | 12,0 |

STANDARD EQUIPMENT

CODE: TBFX01183
**EXTRA STRONG FLEXIBLE
HOSE 2 m Ø36 mm**



CODE: -
MICROFIBER BAG



CODE: LAFN28238 (FOR 1PC)
**ALUMINIUM/PLASTIC
TUBE 50 cm Ø36 mm**
(MACHINE COMES WITH 2PCS)



CODE: LAFN85073
**HANDLE WITH AIR
REGULATOR Ø36 mm**



CODE: SPPV01771
**DOUBLE USE BRUSH
Ø36 mm**



CODE: SPPV28245
**WET FLOOR TOOL
Ø36 mm**



CODE: SPPV28242
FLAT LANCE Ø36 mm



CODE: SPPV28243
ROUND BRUSH Ø36 mm



CODE: MPVR00141
SMALL TOOL Ø36 mm



CODE: KTRI02943
DRY FILTERING KIT

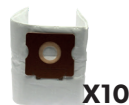


OPTIONAL ACCESSORIES

CODE: KTRI03035
PAPER BAG SET OF 10 PCS



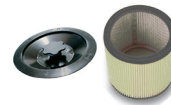
CODE: KTRI04795
**MICROFIBER BAG SET OF
10 PCS**



CODE: FTDP00222
PREFILTER PCB



CODE: FTDP00654
**WASHABLE CARTRIDGE
KIT W/RING AND GASKET**



CODE: FTDP00657
**HEPA CARTRIDGE KIT W/
RING AND GASKET**



CODE: MPVR28723
FASTENING PLASTIC RING



CODE: FTDP44260
**WASHABLE POLYESTER
CARTRIDGE (AVAILABLE
AS SPARE PART) 3.000 cm²**



CODE: FTDP28844
**HEPA H13 CARTRIDGE
(AVAILABLE AS SPARE PART)
3.000 cm²**



CODE: FTDP28755
MESH FILTER



CODE: KTRI03005
**FILTERING KIT SUITABLE
FOR CARTRIDGE**



CODE: KTRI06273
**3D WET FILTERING KIT FOR
MIXTURES**



CODE: MPVR11566
**CREVICE TOOL 35 cm
Ø36 mm**



CODE: MPVR11567
**FLEXIBLE CREVICE TOOL
60 cm Ø36 mm**



CODE: KTRI02734
**CONDUCTIVE TOOL KIT
Ø36 mm
(FOR STEEL TANK MODEL)**

